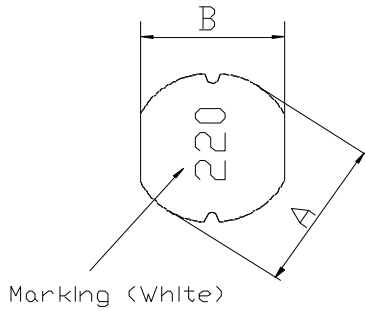
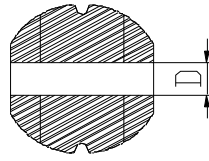
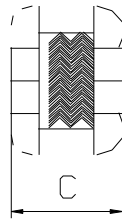


## DIMENSIONS & RECOMMENDED PATTERN



Marking (White)



- A:  $5.8 \pm 0.3$  mm
- B:  $5.2 \pm 0.3$  mm
- C:  $3.0 \pm 0.3$  mm
- D: 2.0 Typ. mm

### ※FEATURE

Applications: Notebook PC, LCD TV, MP3-player, G.P.S, PDA

## SELECTION GUIDE FOR STANDARD COILS:

MAGLAYERS PT/NO.	Inductance L( $\mu$ H)	Percent Tolerance	Test Frequency	Resistance RDC( $\Omega$ )Max.	Rated DC Current IDC(A)	Marking
GSCD-53-1R0□	1.0	M,N	100kHz/0.25V	30m	4.50	1R0
GSCD-53-1R4□	1.4	M,N	100kHz/0.25V	30m	4.10	1R4
GSCD-53-1R5□	1.5	M,N	100kHz/0.25V	30m	4.00	1R5
GSCD-53-1R8□	1.8	M,N	100kHz/0.25V	30m	3.70	1R8
GSCD-53-2R2□	2.2	M,N	100kHz/0.25V	30m	3.50	2R2
GSCD-53-2R7□	2.7	M,N	100kHz/0.25V	40m	3.20	2R7
GSCD-53-3R3□	3.3	M,N	100kHz/0.25V	50m	2.80	3R3
GSCD-53-3R9□	3.9	M,N	100kHz/0.25V	60m	2.60	3R9
GSCD-53-4R7□	4.7	M,N	100kHz/0.25V	70m	2.50	4R7
GSCD-53-5R6□	5.6	M,N	100kHz/0.25V	80m	2.40	5R6
GSCD-53-6R8□	6.8	M,N	100kHz/0.25V	90m	2.20	6R8
GSCD-53-8R2□	8.2	M,N	100kHz/0.25V	0.10	2.00	8R2
GSCD-53-100□	10	K,L,M	100kHz/0.25V	0.12	1.80	100
GSCD-53-120□	12	L,M	100kHz/0.25V	0.13	1.75	120
GSCD-53-150□	15	L,M	100kHz/0.25V	0.15	1.70	150
GSCD-53-180□	18	L,M	100kHz/0.25V	0.18	1.60	180
GSCD-53-220□	22	L,M	100kHz/0.25V	0.22	1.30	220
GSCD-53-270□	27	K,L,M	100kHz/0.25V	0.26	1.20	270
GSCD-53-330□	33	K,L,M	100kHz/0.25V	0.33	1.10	330
GSCD-53-390□	39	L,M	100kHz/0.25V	0.42	1.00	390
GSCD-53-470□	47	K,L,M	100kHz/0.25V	0.50	0.90	470
GSCD-53-560□	56	L,M	100kHz/0.25V	0.55	0.85	560
GSCD-53-680□	68	L,M	100kHz/0.25V	0.65	0.80	680
GSCD-53-820□	82	L,M	100kHz/0.25V	0.80	0.65	820
GSCD-53-101□	100	K,M	100kHz/0.25V	0.90	0.60	101
GSCD-53-121□	120	K,M	100kHz/0.25V	1.00	0.58	121
GSCD-53-151□	150	K,M	100kHz/0.25V	1.30	0.43	151
GSCD-53-181□	180	K,M	100kHz/0.25V	1.50	0.41	181
GSCD-53-221□	220	K,M	100kHz/0.25V	2.00	0.38	221
GSCD-53-271□	270	K,M	100kHz/0.25V	2.50	0.35	271
GSCD-53-331□	330	K,M	100kHz/0.25V	3.20	0.28	331
GSCD-53-391□	390	K,M	100kHz/0.25V	3.50	0.26	391
GSCD-53-471□	470	K,M	100kHz/0.25V	4.20	0.20	471
GSCD-53-561□	560	K,M	100kHz/0.25V	4.50	0.19	561
GSCD-53-681□	680	K,M	100kHz/0.25V	6.50	0.18	681
GSCD-53-821□	820	K,M	100kHz/0.25V	7.50	0.15	821
GSCD-53-102□	1000	K,M	100kHz/0.25V	8.00	0.13	102

※GENERAL SPECIFICATION:

※□ specify the inductance tolerance, K( $\pm 10\%$ ), L( $\pm 15\%$ ), M( $\pm 20\%$ ), N( $\pm 30\%$ )

※ IDC : Based on inductance change ( $\Delta L/L_0$  : drop 10% Max.) @ ambient temp. 25°C and  
Based on temperature rise ( $\Delta T$  : 40°C TYP.)