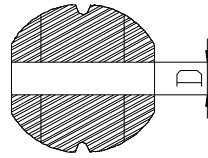
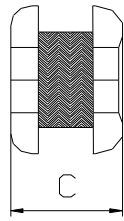
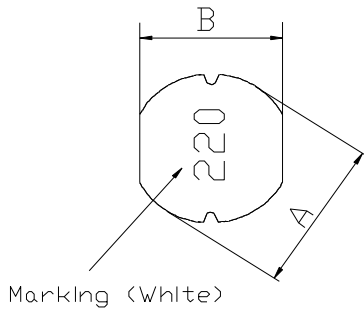


DIMENSIONS & RECOMMENDED PATTERNNSIONS



- A: 4.5 ± 0.3 mm
- B: 4.0 ± 0.3 mm
- C: 3.2 ± 0.3 mm
- D: 1.5 Typ. mm

※FEATURE

Applicafions: Notebook PC, LCD TV, MP3-player, G.P.S, PDA

SELECTION GUIDE FOR STANDARD COILS:

MAGLAYERS PT/NO.	Inductance L(μ H)	Percent Tolerance	Test Frequency	Resistance RDC(Ω)Max.	Rated DC Current IDC(A)	Marking
GSCD-43-1R0□	1.0	M	100kHz/0.25V	48.7m	2.70	1R0
GSCD-43-1R2□	1.2	M	100kHz/0.25V	52.4m	2.60	1R2
GSCD-43-1R4□	1.4	M	100kHz/0.25V	56.2m	2.50	1R4
GSCD-43-1R5□	1.5	M	100kHz/0.25V	56.2m	2.50	1R5
GSCD-43-1R8□	1.8	M	100kHz/0.25V	63.7m	2.33	1R8
GSCD-43-2R2□	2.2	K,M	100kHz/0.25V	71.2m	2.25	2R2
GSCD-43-2R7□	2.7	K,M	100kHz/0.25V	78.7m	2.16	2R7
GSCD-43-3R3□	3.3	M	100kHz/0.25V	86.2m	2.00	3R3
GSCD-43-3R9□	3.9	M	100kHz/0.25V	93.7m	1.84	3R9
GSCD-43-4R7□	4.7	M	100kHz/0.25V	0.1087	1.62	4R7
GSCD-43-5R6□	5.6	M	100kHz/0.25V	0.1257	1.48	5R6
GSCD-43-6R8□	6.8	M	100kHz/0.25V	0.1312	1.43	6R8
GSCD-43-8R2□	8.2	M	100kHz/0.25V	0.1462	1.37	8R2
GSCD-43-100□	10	K,M	100kHz/0.25V	0.182	1.04	100
GSCD-43-120□	12	M	100kHz/0.25V	0.210	0.97	120
GSCD-43-150□	15	M	100kHz/0.25V	0.235	0.85	150
GSCD-43-180□	18	M	100kHz/0.25V	0.338	0.74	180
GSCD-43-220□	22	K,M	100kHz/0.25V	0.378	0.68	220
GSCD-43-270□	27	M	100kHz/0.25V	0.522	0.62	270
GSCD-43-330□	33	K,M	100kHz/0.25V	0.540	0.56	330
GSCD-43-390□	39	K,M	100kHz/0.25V	0.587	0.52	390
GSCD-43-470□	47	K,M	100kHz/0.25V	0.844	0.44	470
GSCD-43-560□	56	K,M	100kHz/0.25V	0.937	0.42	560
GSCD-43-680□	68	K,M	100kHz/0.25V	1.117	0.37	680
GSCD-43-820□	82	K,M	100kHz/0.25V	1.200	0.30	820
GSCD-43-101□	100	K	100kHz/0.25V	1.440	0.28	101
GSCD-43-121□	120	K	100kHz/0.25V	1.60	0.24	121
GSCD-43-151□	150	K	100kHz/0.25V	1.80	0.22	151
GSCD-43-181□	180	K	100kHz/0.25V	2.18	0.21	181
GSCD-43-221□	220	K	100kHz/0.25V	2.57	0.20	221
GSCD-43-271□	270	K	100kHz/0.25V	3.52	0.18	271
GSCD-43-331□	330	K	100kHz/0.25V	5.00	0.12	331
GSCD-43-391□	390	K	100kHz/0.25V	6.00	0.115	391
GSCD-43-471□	470	K	100kHz/0.25V	7.00	0.11	471

※GENERAL SPECIFICATION:

※ □ specify the inductance tolerance, K($\pm 10\%$), M($\pm 20\%$)

※ IDC: Based on inductance change ($\Delta L/L_0$: drop 10% Max.) @ ambient temp. 25°C
Based on temperature rise (ΔT : 40°C TYP.)