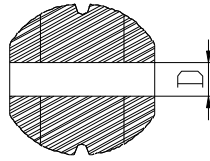
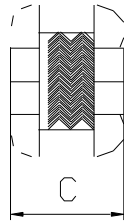
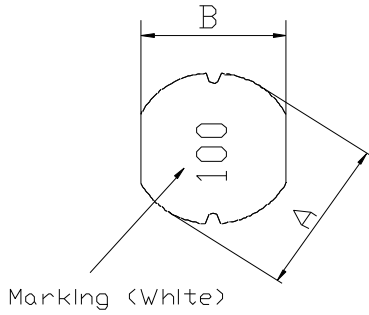


DIMENSIONS & RECOMMENDED PATTERN



A : 10.0± 0.3	mm
B : 9.0± 0.3	mm
C : 7.50 Max.	mm
D : 3.20 Typ.	mm

※FEATURE

Applications: Notebook PC, LCD TV, MP3-player, G.P.S., PDA

SELECTION GUIDE FOR STANDARD COILS:

MAGLAYERS PT/NO.	Inductance L(μH)	Percent Tolerance	Test Frequency	Resistance RDC(Ω)Max.	Rated DC Current		Marking
					IDC1(A)	IDC2(A)	
GSCD-106-100□	10	M	100kHz/0.25V	60m	3.50	4.20	100
GSCD-106-120□	12	M	100kHz/0.25V	70m	3.40	3.80	120
GSCD-106-150□	15	M	100kHz/0.25V	80m	3.10	3.50	150
GSCD-106-180□	18	M	100kHz/0.25V	90m	3.00	3.20	180
GSCD-106-220□	22	M	100kHz/0.25V	0.10	2.60	2.85	220
GSCD-106-270□	27	M	100kHz/0.25V	0.11	2.40	2.70	270
GSCD-106-330□	33	M	100kHz/0.25V	0.12	2.30	2.50	330
GSCD-106-390□	39	M	100kHz/0.25V	0.14	2.10	2.35	390
GSCD-106-470□	47	M	100kHz/0.25V	0.17	1.95	2.20	470
GSCD-106-560□	56	M	100kHz/0.25V	0.19	1.85	2.00	560
GSCD-106-680□	68	M	100kHz/0.25V	0.22	1.65	1.90	680
GSCD-106-820□	82	M	100kHz/0.25V	0.25	1.50	1.70	820
GSCD-106-101□	100	K,M	100kHz/0.25V	0.35	1.40	1.60	101
GSCD-106-121□	120	K,M	100kHz/0.25V	0.40	1.30	1.40	121
GSCD-106-151□	150	K,M	100kHz/0.25V	0.47	1.20	1.30	151
GSCD-106-181□	180	K,M	100kHz/0.25V	0.63	1.00	1.10	181
GSCD-106-221□	220	K,M	100kHz/0.25V	0.73	0.95	1.05	221
GSCD-106-271□	270	K,M	100kHz/0.25V	0.97	0.90	0.95	271
GSCD-106-331□	330	K,M	100kHz/0.25V	1.15	0.80	0.85	331
GSCD-106-391□	390	K,M	100kHz/0.25V	1.30	0.75	0.80	391
GSCD-106-471□	470	K,M	100kHz/0.25V	1.48	0.65	0.70	471
GSCD-106-561□	560	K,M	100kHz/0.25V	1.90	0.60	0.65	561
GSCD-106-681□	680	K,M	100kHz/0.25V	2.45	0.50	0.55	681
GSCD-106-821□	820	K,M	100kHz/0.25V	2.55	0.48	0.50	821
GSCD-106-102□	1000	K,M	100kHz/0.25V	3.00	0.46	0.48	102

※GENERAL SPECIFICATION:

※ □ Specify the inductance tolerance, K($\pm 10\%$), M($\pm 20\%$)

※ IDC1 : Based on inductance change ($\Delta L/L_0$: drop 10% Max.)@ ambient temperature 25°C

IDC2 : Based on temperature rise (ΔT : 40°C TYP.) Rated

DC Current : The less value which is IDC1 or IDC2.