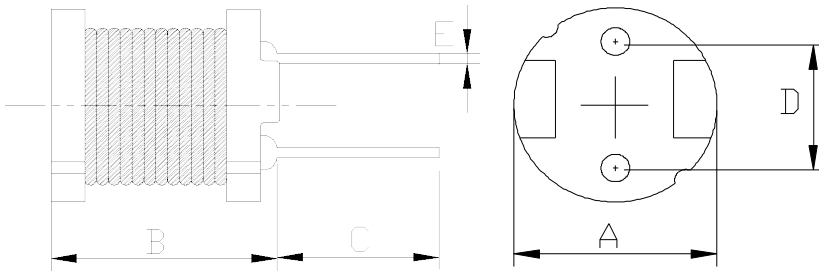


DIMENSIONS & RECOMMENDED PATTERN



A : 7.8±0.5	mm
B : 6.5 Max.	mm
C : 15±2.0	mm
D : 5.0±0.5	mm
E : φ0.65±0.1	mm

※FEATURE

Applications:DC-DC converters,LCD Set,OA equipment,notebook, PDA

SELECTION GUIDE FOR STANDARD COILS:

MAGLAYERS PT/NO.	Inductance L(μH)	Percent Tolerance	Test Frequency	Resistance RDC(Ω)Max.	Rated DC Current
					IDC1(A)
GDR-855C-150□	15	K,M	100kHz/0.25V	90m	2.1
GDR-855C-220□	22	K,M	100kHz/0.25V	0.12	1.7
GDR-855C-330□	33	K,M	100kHz/0.25V	0.17	1.4
GDR-855C-121□	120	K,M	100kHz/0.25V	0.59	0.76
GDR-855C-331□	330	K,M	100kHz/0.25V	1.47	0.44
GDR-855C-471□	470	K,M	100kHz/0.25V	1.95	0.38
GDR-855C-821□	820	K,M	100kHz/0.25V	3.82	0.31
GDR-855C-102□	1000	K,M	100kHz/0.25V	5.28	0.25
GDR-855C-122□	1200	J,K	1kHz/0.25V	6.03	0.23
GDR-855C-152□	1500	J,K	1kHz/0.25V	7.15	0.21
GDR-855C-182□	1800	J,K	1kHz/0.25V	8.26	0.20
GDR-855C-222□	2200	J,K	1kHz/0.25V	11.1	0.18
GDR-855C-682□	6800	J,K	1kHz/0.25V	31.7	0.098

※GENERAL SPECIFICATION:

※ □ Specify the inductance tolerance, J(±5%), K(±10%), M(±20%)

※ IDC1 : Based on inductance change (ΔL/Lo : drop 10% Max.) @ ambient temp. 25°C

IDC2 : Based on temperature rise (ΔT : 40°C TYP.) Rated

DC Current : The less value which is IDC1 or IDC2.