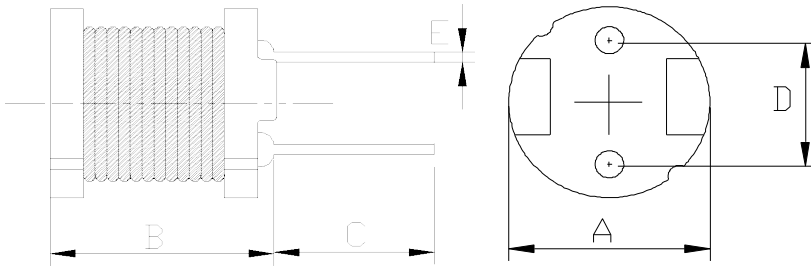


DIMENSIONS & RECOMMENDED PATTERN



A: 6.5Max.	mm
B: 6.5Max.	mm
C: 15±2.0	mm
D: 4.0±0.5	mm
E: φ0.5±0.1	mm

※FEATURE

Applications:DC-DC converters,LCD Set,OA equipment,notebook, PDA

SELECTION GUIDE FOR STANDARD COILS:

MAGLAYERS PT/NO.	Inductance L(μH)	Percent Tolerance	Test Frequency	Resistance RDC(Ω)Max.	Rated DC Current
					IDC1(A)
GDR-664C-101□	100	K,M	100kHz/0.25V	0.43	0.56
GDR-664C-221□	220	K,M	100kHz/0.25V	0.96	0.40

※GENERAL SPECIFICATION:

※ □ specify the inductance tolerance,K(±10%),M(±20%)

※ IDC1 : Based on inductance change (ΔL/Lo : drop 10% Max.) @ ambient temp. 25°C

IDC2 : Based on temperature rise (ΔT : 40°C TYP.) Rated

DC Current : The less value which is IDC1 or IDC2.