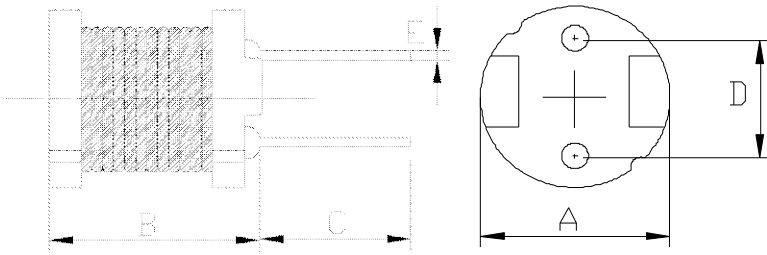


DIMENSIONS & RECOMMENDED PATTERN



A	6.0±0.5	mm
B	5.5 Max.	mm
C	15.0±2.0	mm
D	3.0±0.5	mm
E	φ0.5±0.1	mm

※FEATURE

Applicafions:DC-DC converters,LCD Set,OA equipment,notebook, PDA.

SELECTION GUIDE FOR STANDARD COILS:

MAGLAYERS PT/NO.	Inductance L(μH)	Percent Tolerance	Test Frequency	Resistance RDC(Ω)Max.	Rated DC Current IDC(A)
GDR-654C-R47□	0.47	N	100kHz/0.25V	5.72m	8.00
GDR-654C-1R0□	1.0	N	100kHz/0.25V	11.0m	5.00
GDR-654C-1R2□	1.2	N	100kHz/0.25V	11.0m	5.00
GDR-654C-4R7□	4.7	M	100kHz/0.25V	33.5m	2.50
GDR-654C-220□	22	K,M	100kHz/0.25V	0.18	0.90
GDR-654C-270□	27	K,M	100kHz/0.25V	0.21	0.81
GDR-654C-330□	33	K,M	100kHz/0.25V	0.27	0.74
GDR-654C-390□	39	K,M	100kHz/0.25V	0.29	0.68
GDR-654C-470□	47	K,M	100kHz/0.25V	0.34	0.62
GDR-654C-560□	56	K,M	100kHz/0.25V	0.42	0.57
GDR-654C-680□	68	K,M	100kHz/0.25V	0.48	0.51
GDR-654C-820□	82	K,M	100kHz/0.25V	0.55	0.47
GDR-654C-101□	100	K,M	100kHz/0.25V	0.68	0.42
GDR-654C-121□	120	K,M	100kHz/0.25V	0.77	0.39
GDR-654C-151□	150	K,M	100kHz/0.25V	0.95	0.35
GDR-654C-181□	180	K,M	100kHz/0.25V	1.15	0.32
GDR-654C-221□	220	K,M	100kHz/0.25V	1.30	0.29
GDR-654C-271□	270	K,M	100kHz/0.25V	1.55	0.26
GDR-654C-331□	330	K,M	100kHz/0.25V	2.18	0.23
GDR-654C-391□	390	K,M	100kHz/0.25V	2.47	0.21
GDR-654C-471□	470	K,M	100kHz/0.25V	2.92	0.20
GDR-654C-561□	560	K,M	100kHz/0.25V	3.97	0.18
GDR-654C-681□	680	K,M	100kHz/0.25V	4.57	0.16
GDR-654C-821□	820	K,M	100kHz/0.25V	5.28	0.15
GDR-654C-102□	1000	K,M	100kHz/0.25V	7.06	0.13

※GENERAL SPECIFICATION:

※ 1. □Specify the inductance tolerance, K(±10%), M(±20%)

※ 2. IDC1 : Based on inductance change (ΔL/Lo : drop 10% Max.) @ ambient temp. 25°C

IDC2 : Based on temperature rise (ΔT : 40°C TYP.)

Rated DC Current : The less value which is IDC1 or IDC2.