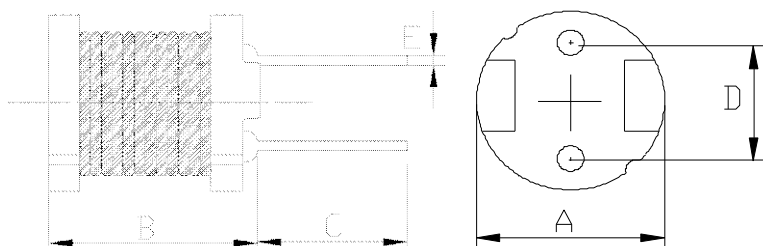


DIMENSIONS & RECOMMENDED PATTERN



A:	10±0.5	mm
B:	10.5 Max.	mm
C:	15±2.0	mm
D:	6.5±0.5	mm
E:	φ0.65±0.1	mm

※FEATURE

Applications:DC-DC converters,LCD Set,OA equipment,notebook, PDA

SELECTION GUIDE FOR STANDARD COILS:

MAGLAYERS PT/NO.	Inductance L(μH)	Percent Tolerance	Test Frequency	Resistance RDC(Ω)Max.	Rated DC Current IDC(A)
GDR-110C-100□	10	M	100kHz/0.25V	22m	5.3
GDR-110C-120□	12	M	100kHz/0.25V	23m	4.9
GDR-110C-150□	15	M	100kHz/0.25V	26m	4.4
GDR-110C-180□	18	M	100kHz/0.25V	33m	4.0
GDR-110C-220□	22	K,M	100kHz/0.25V	37m	3.6
GDR-110C-270□	27	M	100kHz/0.25V	48m	3.3
GDR-110C-330□	33	K,M	100kHz/0.25V	55m	2.9
GDR-110C-390□	39	K,M	100kHz/0.25V	73m	2.7
GDR-110C-470□	47	K,M	100kHz/0.25V	83m	2.5
GDR-110C-560□	56	K,M	100kHz/0.25V	92m	2.3
GDR-110C-680□	68	K,M	100kHz/0.25V	0.12	2.1
GDR-110C-820□	82	K,M	100kHz/0.25V	0.14	1.9
GDR-110C-101□	100	K,M	100kHz/0.25V	0.16	1.7
GDR-110C-121□	120	K,M	100kHz/0.25V	0.20	1.5
GDR-110C-151□	150	K,M	100kHz/0.25V	0.23	1.4
GDR-110C-181□	180	K,M	100kHz/0.25V	0.31	1.3
GDR-110C-221□	220	K,M	100kHz/0.25V	0.34	1.1
GDR-110C-271□	270	K,M	100kHz/0.25V	0.40	1.0
GDR-110C-331□	330	K,M	100kHz/0.25V	0.52	0.93
GDR-110C-391□	390	K,M	100kHz/0.25V	0.65	0.86
GDR-110C-471□	470	K,M	100kHz/0.25V	0.71	0.78
GDR-110C-561□	560	K,M	100kHz/0.25V	1.00	0.71
GDR-110C-681□	680	K,M	100kHz/0.25V	1.10	0.65
GDR-110C-821□	820	K,M	100kHz/0.25V	1.30	0.59
GDR-110C-102□	1000	K,M	100kHz/0.25V	1.70	0.53

※GENERAL SPECIFICATION:

※ 1. □Specify the inductance tolerance, K(±10%), M(±20%)

※ 2. IDC : Based on inductance change (ΔL/Lo : drop 10% Max.) @ ambient temp. 25°C and
Based on temperature rise (ΔT : 40°C TYP.)