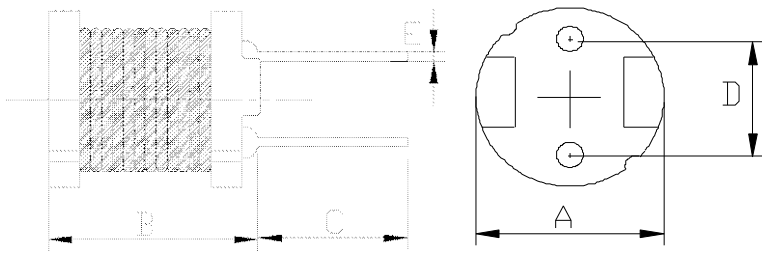


## DIMENSIONS & RECOMMENDED PATTERN



A:	10.0±0.5	mm
B:	8.5Max.	mm
C:	15.0±2.0	mm
D:	6.5±0.5	mm
E:	φ0.65±0.1	mm

※FEATURE

Applicafions:DC-DC converters,LCD Set,OA equipment,notebook, PDA

## SELECTION GUIDE FOR STANDARD COILS:

MAGLAYERS PT/NO.	Inductance L(μH)	Percent Tolerance	Test Frequency	Resistance RDC(Ω)Max.	Rated DC Current IDC(A)
GDR-108C-100□	10	M	100kHz/0.25V	27m	4.5
GDR-108C-120□	12	M	100kHz/0.25V	31m	4.1
GDR-108C-150□	15	M	100kHz/0.25V	36m	3.7
GDR-108C-180□	18	M	100kHz/0.25V	49m	3.4
GDR-108C-220□	22	M	100kHz/0.25V	55m	3.1
GDR-108C-270□	27	M	100kHz/0.25V	62m	2.8
GDR-108C-330□	33	K,M	100kHz/0.25V	79m	2.5
GDR-108C-390□	39	K,M	100kHz/0.25V	87m	2.3
GDR-108C-470□	47	K,M	100kHz/0.25V	99m	2.1
GDR-108C-560□	56	K,M	100kHz/0.25V	0.13	1.9
GDR-108C-680□	68	K,M	100kHz/0.25V	0.14	1.7
GDR-108C-820□	82	K,M	100kHz/0.25V	0.16	1.6
GDR-108C-101□	100	K,M	100kHz/0.25V	0.21	1.4
GDR-108C-121□	120	K,M	100kHz/0.25V	0.24	1.3
GDR-108C-151□	150	K,M	100kHz/0.25V	0.32	1.2
GDR-108C-181□	180	K,M	100kHz/0.25V	0.35	1.1
GDR-108C-201□	200	K,M	100kHz/0.25V	0.37	1.0
GDR-108C-221□	220	K,M	100kHz/0.25V	0.45	0.96
GDR-108C-271□	270	K,M	100kHz/0.25V	0.61	0.87
GDR-108C-331□	330	K,M	100kHz/0.25V	0.69	0.79
GDR-108C-391□	390	K,M	100kHz/0.25V	0.78	0.72
GDR-108C-471□	470	K,M	100kHz/0.25V	1.0	0.66
GDR-108C-561□	560	K,M	100kHz/0.25V	1.2	0.60
GDR-108C-681□	680	K,M	100kHz/0.25V	1.4	0.55
GDR-108C-821□	820	K,M	100kHz/0.25V	1.8	0.50
GDR-108C-102□	1000	J,K	100kHz/0.25V	2.1	0.45

※GENERAL SPECIFICATION:

※□specify the inductance tolerance,J(±5%),K(±10%),M(±20%)

※IDC : Based on inductance change ( $\Delta L/L_0$  : drop 10% Max.) @ ambient temperature 25°C and  
Based on temperature rise ( $\Delta T$  : 40°C TYP.)